

ONLINE

10 DEC 2021 - 29 APR 2022

Leadership, Women and the UN - Cohort I (Africa, Americas, Europe time zone)

LEADERSHIP



LANGUAGE
English



DURATION
4 months, of which 8 weeks are core synchronous learning (from 31 Jan-8 April 2022)



ENROLL BY
03 Dec 2021



PRICE
5,000 USD



LOCATION
ONLINE



TARGET
UN Only

 **CONTACT** leadershipandmanagement@unssc.org

Synchronous Sessions: 3 pm CEST/CET | 4 pm EAT | 9 am EDT | 8 am EST | 8 pm ICT

As a participant in this programme you will join a lively community of highly experienced female professionals and reinforce your leadership journey through an extensive learning experience. This programme, which has at its core an eight-week online course component, will provide you with insights and tips on how to navigate the opportunities and challenges of women in leadership positions, while being in harmony with your aspirations and contributing to a culture of gender equality.

Introduction

The *Leadership, Women and the UN Programme* aims to promote the expansion and renewal of prevalent paradigms of leadership and ensure a more gender-balanced workplace across and beyond the UN System. Furthermore, key to the purpose of the programme is to advance the transformational, principled and inclusive leadership culture envisioned in the UN System Leadership Framework.

The programme gives you a unique opportunity to explore different leadership approaches and their situational application, the gender and cultural dimensions of leadership, dynamics of power, influence and negotiation, as well as deeper personal-professional coherence and self-awareness to develop a set of skills for transformative and charismatic leadership.

Upon completion of the programme you will be prepared to thoughtfully lead yourself through the challenges and opportunities for women in leadership roles; influence the leadership culture of your organization; increase the impact of your projects; and unlock the leadership potential of your team.

The programme is designed for highly experienced UN women professionals at P4-P5 levels.

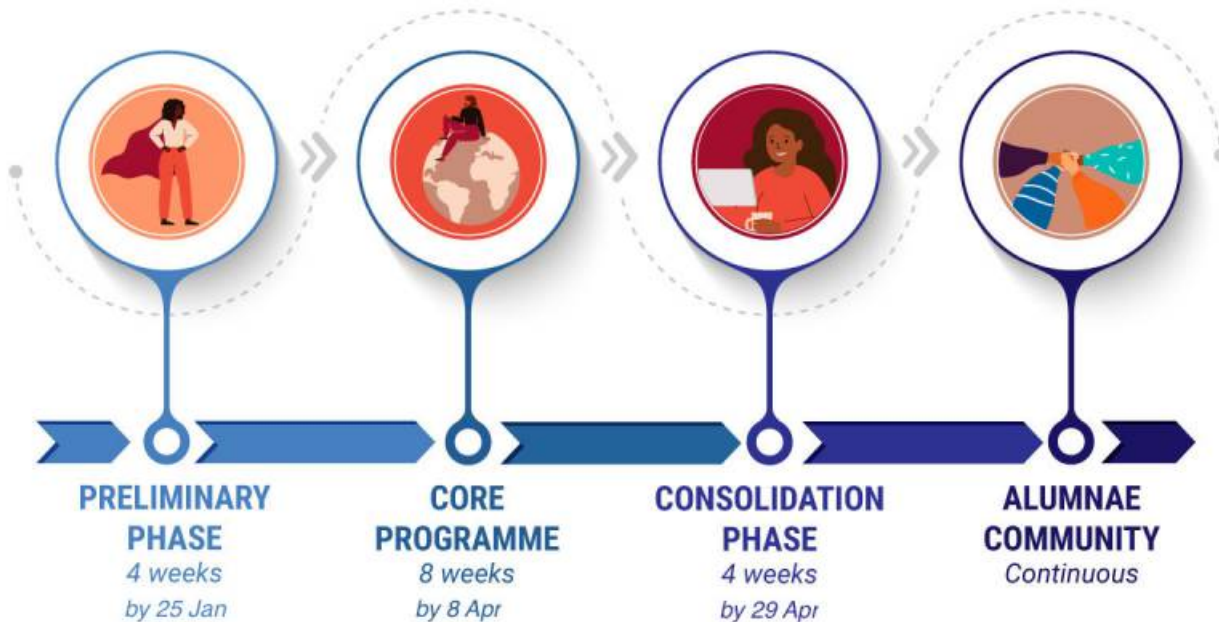
Click [here](#) to find out **how our alumnae assessed the impact of the programme.**

Objectives

Upon successful completion of the programme you will be able to:

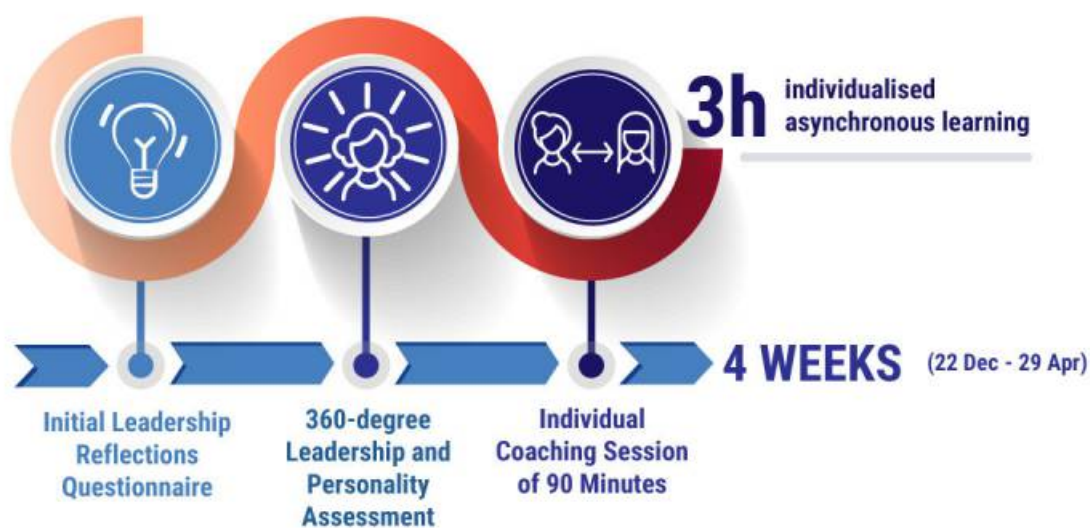
- Develop enhanced self-awareness and align leadership efforts with aspirations
- Thoughtfully adopt varied leadership approaches in daily practices to better manage the challenges and opportunities for women in leadership roles
- Demonstrate strengthened skills in effective communication, negotiation, and influencing for transformative leadership
- Gain tangible skills to unlock the leadership potential and the one of your teams, and increase the impact of your projects
- Positively influence your organizational leadership culture
- Develop a lasting and supportive community

Course methodology



The programme unfolds as a learning journey of four months across three phases: a preliminary phase, a core programme and a consolidation phase.

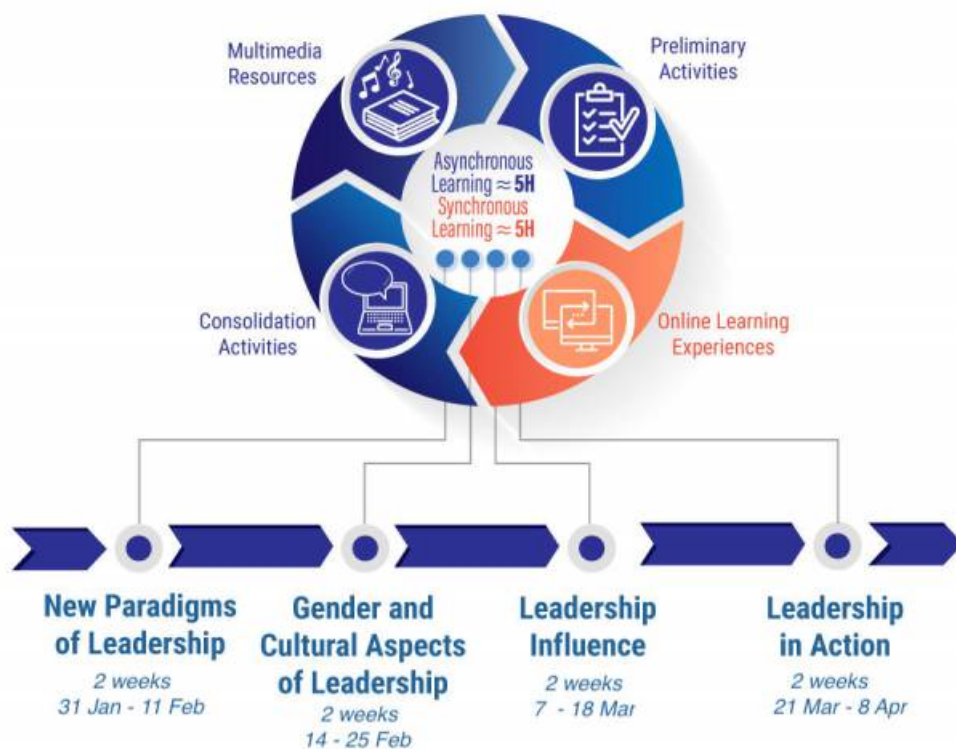
1. Preliminary Phase



The preliminary phase begins four weeks before the beginning of the core programme and it is designed to promote individual awareness around leadership styles and approaches. During this phase you can expect a total of three hours of individualized asynchronous learning through:

- a questionnaire to prompt individual reflections on leadership needs, styles and aspirations and inform the delivery of the core modules (LNA);
- a 360-degree leadership and personality assessment to provide insights into individual leadership strengths and areas for further development;
- an individual coaching session of 90 minutes to debrief the results from the assessment and explore personal development goals.

2. Core Programme



At the core of the learning journey lies a two-month online learning experience that consists of four core modules spanning across eight weeks. Each module lasts two weeks and includes:

- Three synchronous virtual learning experiences with experts, established leaders and facilitators (90-120 min each);
- Asynchronous individual activities such as pre-readings, guided self-reflection and journaling activities or action-planning;
- Asynchronous group activities organized in a moderated forum to promote community building and experience-based knowledge sharing;
- Zoom-in resources, recommended materials, and tools to deepen knowledge acquisition and transfer.

As a participant you will be able to follow the progress of your learning journey on a dedicated online learning platform that features:

- sections curating all programme material and activities (e.g. recording of online learning experiences and weekly activity instructions)
- a moderated discussion forum where group activities will take place and where participants will be able to share reflections and pose questions
- online library with zoom-in resources (videos, articles, inspirational quotes, tools and templates)
- personalized individual virtual journals

3. Consolidation Phase



The learning journey will conclude with a final phase of learning consolidation where you will be supported for 4 weeks to further your learning application process through:

- One individual coaching session (60 min)
- individual "Leadership Commitment" Activity
- final leadership reflections questionnaire and impact assessment

Upon successful completion of the Programme, you will be offered the possibility of becoming part of the vibrant LWUN Alumnae Community.

The community, comprised of over 500 women leaders from 75 duty stations across the world, provides a truly unique opportunity to further individual and collective leadership journeys, establish mutually beneficial knowledge sharing mechanisms, leverage on diverse expertise and skillsets, and forge partnership to promote a systemic renewal of leadership paradigms.

Benefits of becoming part of the community include:

- a dedicated virtual space on the e-lounge platform
- an online library with curated zoom-in resources from different cohorts
- peer-to-peer discussion forum
- "Alumnae Updates" – a curated newsletter with leadership stories from the community, reflections by faculty members, and tools and activities to further leadership readiness
- Yearly alumnae-led booster webinar to zoom-in on a specific leadership theme

The webinar sessions will be conducted through Zoom web conferencing platform. Course activities and the weekly discussion forum will be available on the dedicated virtual space on the e-lounge platform.

Course contents

In this programme, you will be exposed to the following content:

- Leadership Styles and Approaches;
- Leading Change and Innovation;
- Gender and Cultural Dimensions of Leadership;
- Authentic and Inclusive Leadership;
- Leadership Influence, Charismatic Leadership and Gender;
- Political Acumen and Strategic Negotiation;
- Managing Energy for Greater Leadership Alignment and Balance;
- From Reflection to Action.

Watch our *Knowledge Nugget video series* in the Multimedia Gallery below for a glimpse into the faculty and the topics covered during the programme.

Target audience

Female UN staff at the P4-P5 level and other highly experienced female leaders preparing for senior leadership roles. By nomination and open enrolment.

Cost of participation

The programme comprises three phases and costs **\$5,000**. The tuition covers:

- **Preliminary Phase**
 - Individual 360-degree leadership and personality assessment
 - One individual coaching session (90 minutes)
- **Core Programme Phase**
 - 10 -12 interactive synchronous online learning experiences with experts, established leaders, expert facilitators and cohort participants
 - Long-term and unlimited access to a curated online UNSSC e-lounge learning platform
- **Consolidation Phase**
 - One individual coaching sessions (60 minutes)
- **Continuous Alumnae Community Engagement**
 - Long-term and unlimited access to the curated Alumnae Community Platform and all booster initiatives

Faculty



**Dr. Connon
Chou Locke**



**Prof.
Elisabeth
Kelan**



**Prof. John Da
Silva Luiz**



**Dr. Maria
Phalime**



**Prof. John
Antonakis**



**Petra
Schwager**



**Ruby
Sandhu-
Rojon**



**Dr. Beverly
Hyman**